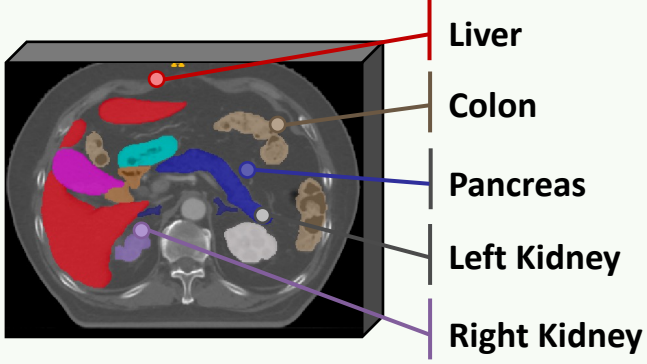


[Concept – Atlas]



Public Segmentation Data

[Concept - Definition]

Pancreas: A nodular organ in the abdomen that contains a mixture of endocrine glands and exocrine glands ...

Pancreas*: A sizable gland that resides behind the stomach and adjacent to the small intestine. It spans about 15 cm in length ...

[Concept – Relation - Concept]

Pancreas – has finding stie – Pancreatic Tumor

Pancreas* – lateral to – Spleen

Human Anatomy Corpus

